



HIGH DEFINITION LIFT DISPLAY



Technical DATA:

Operating Voltage 20 - 24V DC

Power Consumption

15.6" - 0.8A (19W), 18.5"/21.5" - 0.9A(22W)

Secondary Display support output - HDMI

*The OPAL HD lift display offers
a vibrant Full HD screen in
15.6", 18.5" & 21.5" variants.*

EMBEDDED HD MEDIA LIFT DISPLAYS

The OPAL HD range provides an embedded 16:9 colorful and informative Industrial grade high definition elevator display incorporating the promotion of tenants, building information, events, news, advertising, and communication.



16:9 HD COLOUR DISPLAY

The OPAL HD screens come feature rich with the complete range of functionality of our entire OPAL family.

The new HD 16:9 ratio screens with a resolution of 1920x1080p allow for maximum lift content and media options within the lift car Operating panel or custom surface mount fixture.

Technical Data:

Display Resolution:

1920 x 1080 (Full HD), 16:9 aspect ratio

Display Viewing Angle: +89 / -89 (Horizontal/ Vertical)



Technical DATA:

Supported Media:

FTP Grab & Play

HLS Live Streaming

.Mp4, .Jpeg, file formats

DYNAMIC MEDIA



Video playback, image slideshows and dynamic media options all offer opportunities to promote business, advertising and building information.

With seamless integration into 3rd part content via streaming options over HLS or oOh!media direct connect.

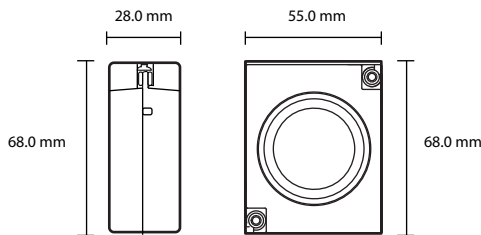
oOh![®]
unmissable



INTEGRATED AUDIO & VIDEO



Our Opal Display offers built in Audio functionality for your elevators Voice annunciation. Ensuring both compliance and functionality of your elevators audio needs.



8 Ohm 2W Multimedia
Speaker Provided with 1.5m lead

Technical Data: ●

Speaker Amplifier 1.3W @ 8 Ohms

Speaker Dimensions : (WxDxH) 55mm x 28mm x 68mm

.mp3 audio file format

emFONE Face2Face integration

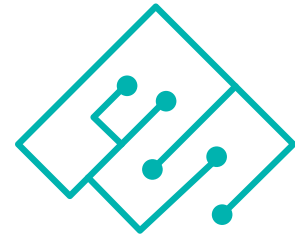


Technical DATA:

Output Protocols: Serial Pixel DataBus, Ethernet
Pixel DataBus Length 400m, maximum of 128 nodes

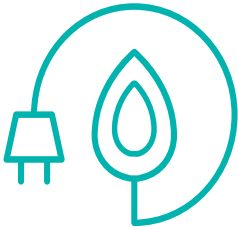


LIFT CONNECTION & INTEGRATION



With multiple connection options to the lift, whether it be direct through a high level protocol or through one of our lift encoder cards, the OPAL displays software has been designed specifically from the ground up for the Lift industry.

AUTO SLEEP DETECTION



The OPAL Display can be programmed to automatically detect lift inactivity and turn off the display backlight to save power for when the lift is not in use.

The display will instantly come back to life when the doors open or lift moves.

Technical Data: •

Auto Sleep : Programmable 0 = disabled, 1 – 999 minutes

Standby mode power consumption: 0.3A (7W)



Technical DATA:

Software Server:

Windows compatible Pixel Programmer Tool X9 software.

USB interface, Ethernet 100BASE-T (100Mbps). LAN over 2

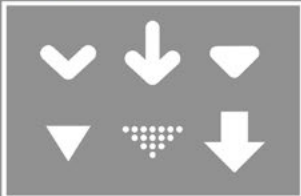
Wire trailer cable support.



CUSTOMISE LAYOUT



SELECT



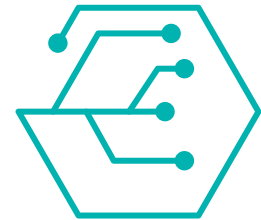
LAN



USB



SOFTWARE AND CONNECTIVITY



The user friendly software allows for seamless design layout configuration and updates of the displays content via USB or LAN directly connected from a pixel network or by a remote wireless / internet connection from a connected wifi router.

Giving you complete control over the content on your display screens at any time - update tenant listings, building notices, advertising / media content and more, all with ease.

HARDWARE AND DESIGN

With its new slim embedded industrial design the OPAL Australian manufactured motherboard and enclosure comes together to offer the ideal lift display, offering proven long term reliability - service and support.

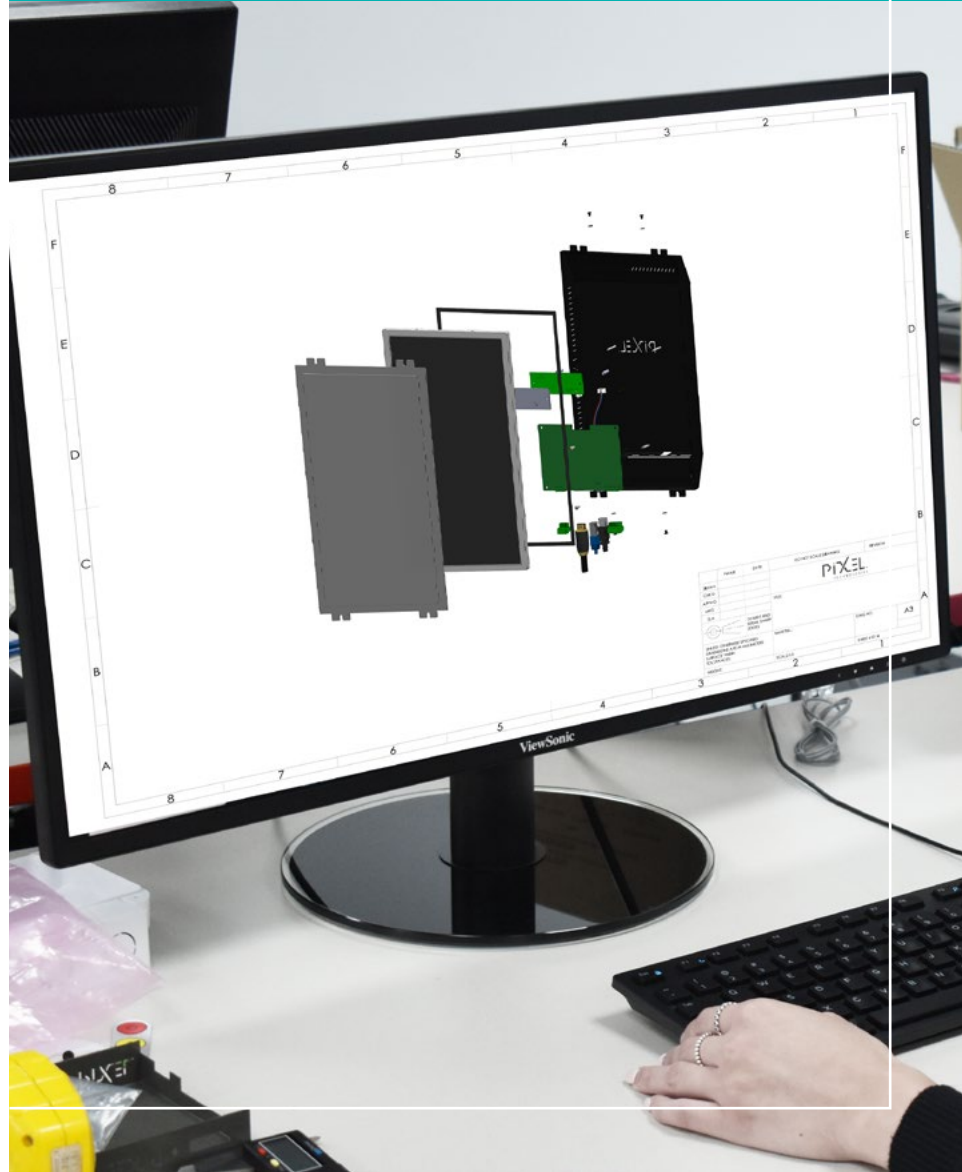


Technical Data:

Operating Temp/Humidity 0 - 50°C, 90% max RH, non-condensing
Viewing Area: WxH (mm) 193x344(15.6"), 230x409(18.5"),
268x476(21.5")

Dimensions (HxWxD) - 15.6" : 388x219x28mm

18.5" : 457x257.5x33mm 21.5" : 520x295x37mm



TECHNICAL SPECIFICATIONS



| Screen size | 10.4" | 12.1" | 15" | 19" | 15.6"HD | 18.5"HD | 21.5"HD |
|-----------------------|---|---|---|---|---|---|---|
| LCD Display Type | LED LCD | LED LCD | LED LCD | LED LCD | LED LCD | LED LCD | LED LCD |
| Colour Depth | 24 Bit | 24 Bit | 24 Bit | 24 Bit | 24 Bit | 24 Bit | 24 Bit |
| Resolution | 1024x768px | 800x600px | 1024x768px | 1280x1024px | 1920x1080px | 1920x1080px | 1920x1080px |
| Aspect Ratio | 4:3 | 4:3 | 4:3 | 4:3 | 16:9 | 16:9 | 16:9 |
| Viewing Area | 161x214mm | 188x249mm | 231x306mm | 305x380mm | 193x344mm | 230x409mm | 268x476mm |
| Viewing Angle | +89/-89 | +89/-89 | +89/-89 | +89/-89 | +89/-89 | +89/-89 | +89/-89 |
| Operating Voltage | 24V (DC) | 24V (DC) | 24V (DC) | 24V (DC) | 24V (DC) | 24V (DC) | 24V (DC) |
| Current Consumption | 0.4 | 0.6 | 0.6 | 1.3 | 0.8 | 0.9 | 0.9 |
| Dimensions (WxHxD) | 192x251x 36.5 mm | 220x270.5x 38.5 mm | 267x346.5x 37.2 mm | 340x412x 40.5 mm | 219x388x 27.4 mm | 257.4x454.5x 32.6 mm | 295x520x 37 mm |
| Lift Interface | PIXEL 4-WIRE SERIAL/ PIXEL LAN | PIXEL 4-WIRE SERIAL/ PIXEL LAN | PIXEL 4-WIRE SERIAL/ PIXEL LAN | PIXEL 4-WIRE SERIAL/ PIXEL LAN | PIXEL 4-WIRE SERIAL/ PIXEL LAN | PIXEL 4-WIRE SERIAL/ PIXEL LAN | PIXEL 4-WIRE SERIAL/ PIXEL LAN |
| Programming Interface | LAN / USB | LAN / USB | LAN / USB | LAN / USB | LAN / USB | LAN / USB | LAN / USB |
| Touch Interface* | Built In | Built In | Built In | Built In | Built In | Built In | Built In |

* Touch screen options available



+61 3 8843 0700



www.pixeltechnologies.com.au
info@pixeltechnologies.com.au



Melbourne | Sydney
Brisbane | Singapore | Christchurch

© 2023 Pixel Technologies Pty Ltd
Supplier No. E5405

Proudly Designed & Manufactured in Australia for the World

Pixel Technologies assumes no responsibility for any errors that may appear in this publication.
All images are for illustration purposes only. Specifications are subject to change without prior notice.
All information stated in the brochure is correct at time of printing and subject to change without notice.