

LX-1

LIFT DIGITAL IP COMMUNICATION SYSTEM

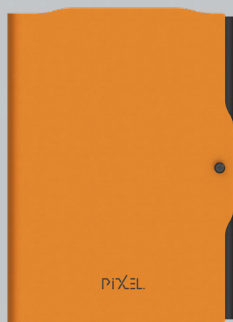


PIXEL.
TECHNOLOGIES

EM-181/SK



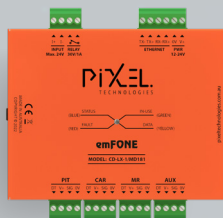
CD-LX1/M5L



EM-181/SL



CD-LX1/MD181



CD-LX1/CSL



LIFT DIGITAL IP COMMUNICATION SOLUTION

The LX1 digital lift emergency phone communications solution provides high-quality hands-free loud speaking intercom and emergency auto-dialling to the system console or external world and complies with the latest EN81-28 lift standards.

With ethernet integration into managed building networks, 2-wire connectivity for easy upgrades, remote management and monitoring of all devices, this system offers flexible and redundant alarm call routing options. Additionally, the battery backup system ensures that your lifts are always covered.

MAIN FEATURE HIGHLIGHTS



IP communication



Expandable system



Line interface



4G VoLTE redundancy



Webserver configurable



Single Pair Ethernet



Remote Management



Monitoring



Battery Backup

Compatible with emFONE & ACMA approved telephones.

EXPANDABLE SOLUTION TO SUIT YOUR BUILDING

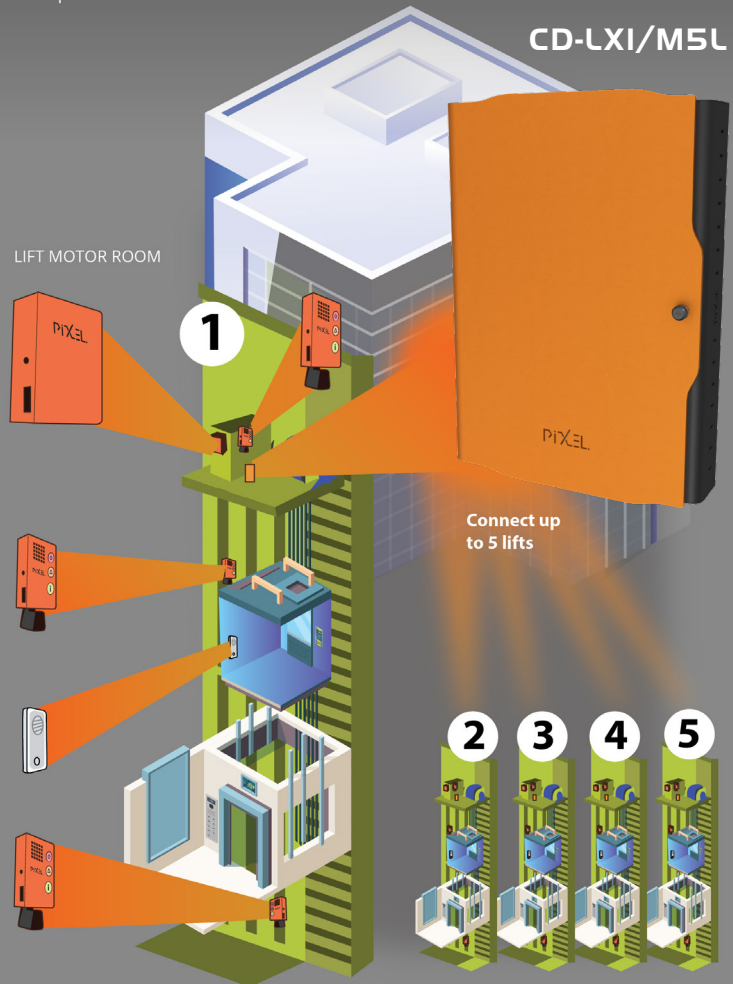
All Digital Master units within the lift controller cabinets are wired back to a central Ethernet Hub, LX-1/M5L. The main Ethernet Hub is equipped with its own battery back-up system that powers all devices connected to its ports. This cabinet is designed for installation within the lift motor room and can power up to 5 lifts. The system is expandable through the addition of extra Ethernet cabinets and supports external lines that can be shared across the entire system. Our innovative 2-wire single-pair Ethernet interface ensures seamless connectivity through existing building infrastructure, enabling the system to connect machine rooms to a central location.

Technical DATA:

Operating Voltage : 100-240V AC, 50/60Hz

Operating Current (15VDC) 150mA (Idle), 780mA (Charging)

Port Output Current : 500mA Fuse (Reuseable)



FEATURES



Connection to 5 lifts



2 x RJ-45 Ethernet Ports



4 x Pixel MPCle Module

• Technical DATA:

Operating Voltage 18 - 24V DC

Operating Current : EM-181/S (SK): 18mA

EM-181/SK



EM-181/SL



LIFT MOTOR ROOM

TOP OF CAR

CAR UNIT

PIT

FEATURES



Emergency Loud
Speaker



Compact for
mounting



Backlit emergency
buttons



Self-testing &
reporting

LIFT INTERCOM STATIONS

A range of station options are available for emergency communications within the lift cabin in the event of a failure, as well as within the lift environment, including the top of the lift, lift pit, lift motor room or MRL cabinet. These stations ensure full communication between lift mechanics and trapped passengers or other individuals within the system. The system provides high quality, hands-free loudspeaking intercom and emergency auto-dialing to the system console or external networks based on the master controller's programmed dialing rules. This ensures full compliance with AS-1735.19 and EN 81-28 standards.

LIFT MASTER INTERFACE

The LX1 Master Devices mounted to the Lift Controller Cabinets enable Pixel's LX1 VoIP communication protocol over our 4-wire StationBus interface. Individual terminals allow for easy wiring with support for up to eight Lift Intercom Stations, all in an industrial-designed DIN rail-mounted package suitable for compact installations.

Technical DATA:

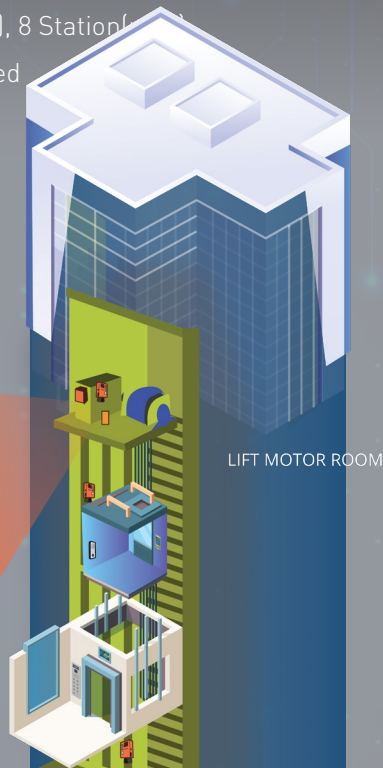
Operating Voltage : 12 - 24V DC

Operating Current : 50mA (Idle), 75mA (Active)

Configuration : On-Device HTTP Webserver

StationBus : 4-wire, Up to 400m (max), 8 Stations

YSEL hearing loop for hearing impaired



MASTER CONTROLLER FEATURES



Alarm Adjust



Alarm Call Routing



Voice Identification



Call Queuing



8 Intercom Stations



4-wire connectivity

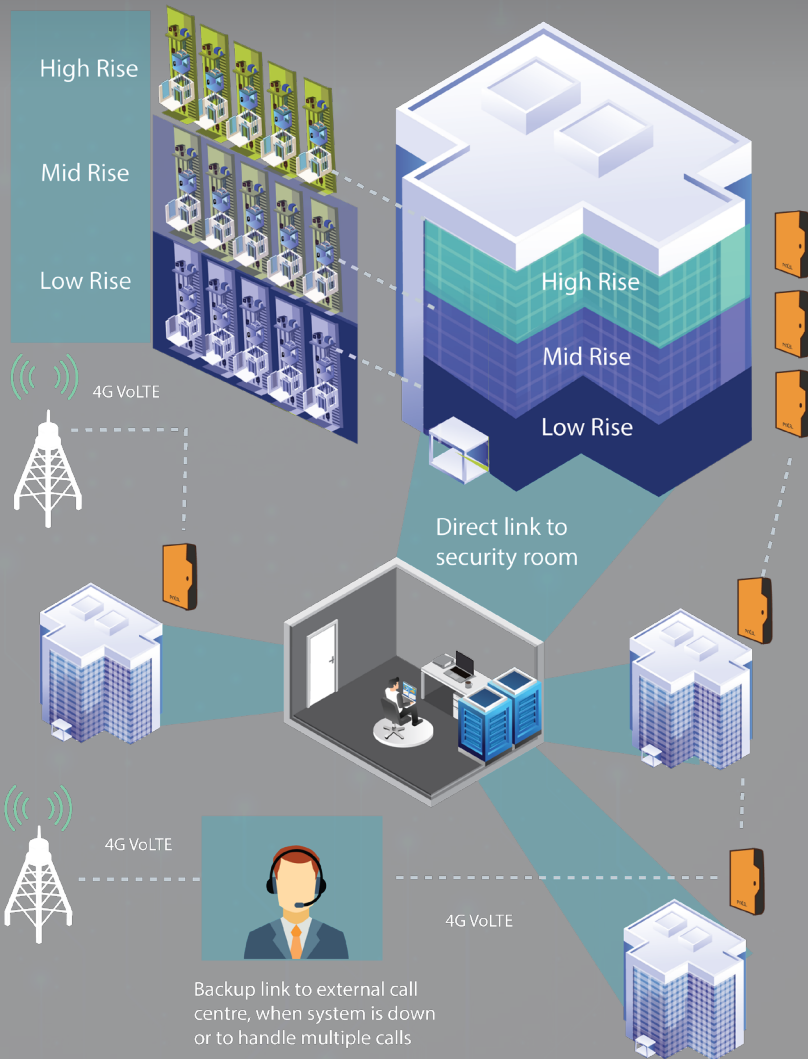


RGB LED Status

Technical DATA:

CD-LX1/T2 – 2 x FXO Ports

CD-LX1/SPE – Single Pair ethernet connectivity up to 1000m



INTERFACE OPTIONS

Dual line FXO Interface (Foreign Exchange Office)

Allowing connection to the building phone system or a pixel gateway for external calls both to and from the system in the event of network failure or alternative calling options to the external Lift maintenance service centre.

Single Pair Ethernet Interface

Allowing the expansion and connection of ethernet over a single pair cable. An ideal and cost effective solution for upgrades to the existing building where running of new LAN cables from remote points to the central control room is not practical. Use existing building telecom or data cable to achieve a digital LAN connection up to 1000 meters.

CONSOLE

The console provides high-quality loudspeaker and handset voice communication over Pixel's VoIP communication protocol, all in an industrial-designed desk or wall mounted package.

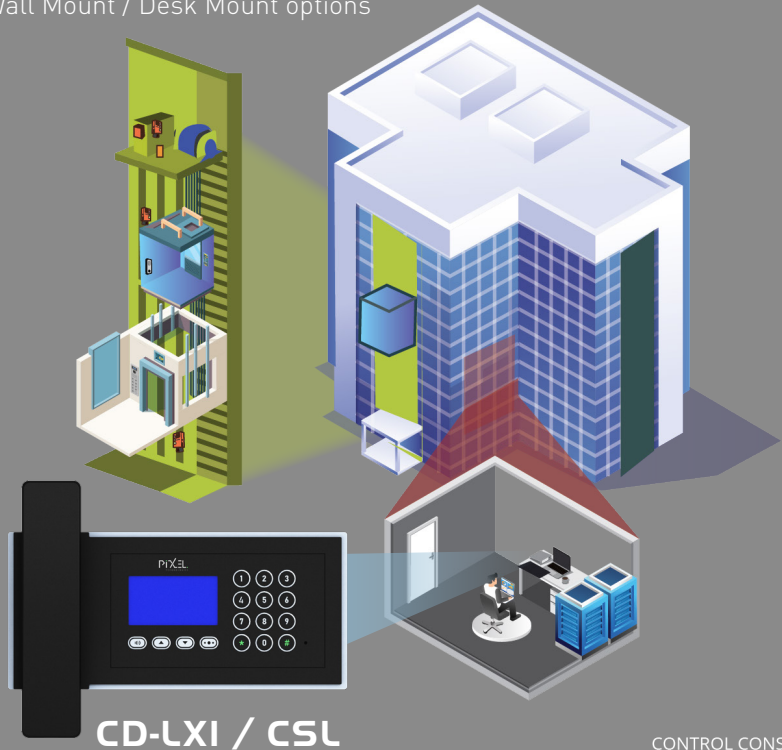
Serving as a central call point internal to the system, it is typically installed in Security or Fire control Rooms, Facility Management Offices, Lift Machine Rooms, or at a Concierge Desks. Multi-console support provides additional alarm call routing facility to the system before calls are routed externally.

Technical DATA:

Operating Voltage 12 - 24V DC

Operating Current 65mA (Idle), 100mA (Active)

Wall Mount / Desk Mount options



CONTROL CONSOLE

CONSOLE FEATURES



Hands-free
Loudspeaker



Multiple
Console



Network
Auto-Detect



LCD keypad
menu



Caller ID



Paging
options



Call Queuing

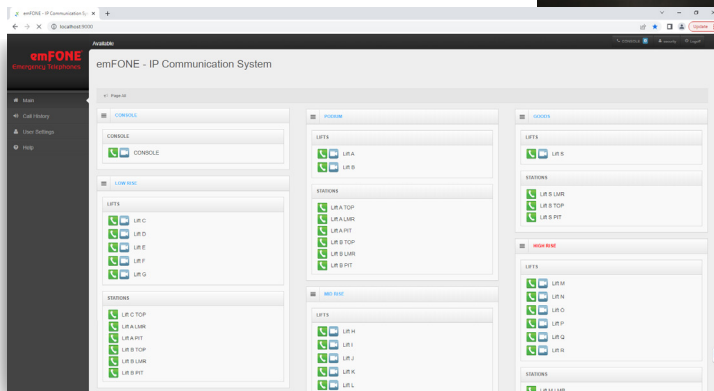
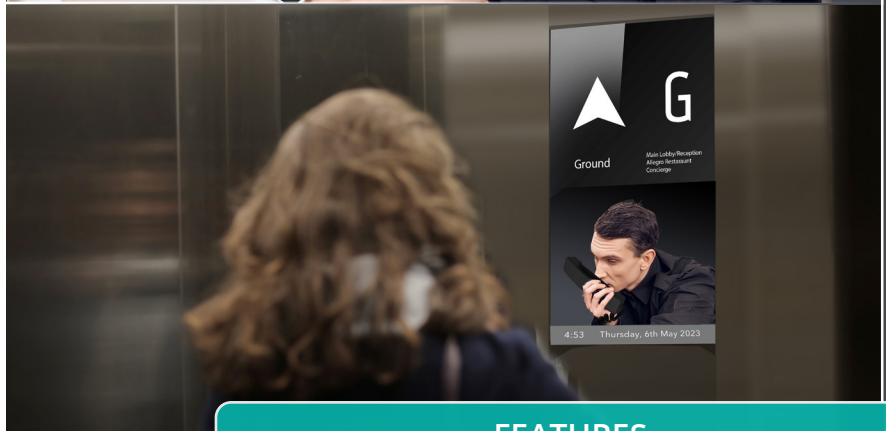
SYSTEM MONITORING

Installation of the LX1 webserver on the network allows for complete system interaction which simplifies user access and control of the system.

Integration to our PC-hosted LX1 Webserver brings a host of additional features with a point and click user experience. Additional integration with in-car digital IP cameras and the Pixel OPAL lift display system enables face-to-face video communication.

Technical DATA:

- HTTP web server login
- On screen Live notification
- Mjpeg video integration
- .wav audio communication recording



FEATURES



Click to dial / answer



Multi Location Management



Hardware Monitoring



Emergency call record/playback



Logging alarms & faults



Trapped Passenger visuals



+61 3 8843 0700



www.pixeltechnologies.com.au
info@pixeltechnologies.com.au



Melbourne | Sydney
Brisbane | Singapore | Christchurch